

New High School for Schofields and Tallawong

Guntawong Road, Tallawong NSW 2155

Landscape REF

© 2021 Site Image (NSW) Pty Ltd ABN 44 801 262 380 as agent for Site Image NSW Partnership. All rights reserved. This drawing is copyright and shall not be reproduced or copied in any form or by any means (graphic, electronic or mechanical including photocopy) without the written permission of Site Image (NSW) Pty Ltd. Any license, expressed or implied, to use this document for any purpose what so ever is restricted to the terms of the written agreement between Site Image (NSW) Pty Ltd and the instructing party.

The contractor shall check and verify all work on site (including work by others) before commencing the landscape installation. Any discrepancies are to be reported to the Project Manager or Landscape Architect prior to commencing work. Do not scale this drawing. Any required dimensions not shown shall be referred to the Landscape Architect for confirmation.

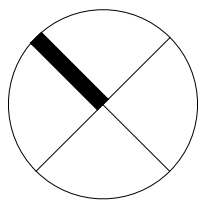
03	REF	RG	NM	20.01.2025
02	REF	RG	NM	10.01.2025
01	Final Draft Issue for REF	RG	NM	22.11.2024
Issue		Revision Description		Drawn Check Date

Drawing Schedule

Drawing Number	Drawing Title	Scale
000	Landscape Coversheet	As Shown
002	Planting Schedule	N/A
100	Landscape Masterplan	1:500
101	Landscape Plan - 1	1:150
102	Landscape Plan - 2	1:150
103	Landscape Plan - 3	1:150
104	Landscape Plan - 4	1:150
105	Landscape Plan - 5	1:150
106	Landscape Plan - 6	1:150
501	Landscape Details	As Shown
502	Landscape Details	As Shown
901	Tree Retention Plan	1:500
902	Canopy Cover Diagram	As Shown
903	Landscape Area Diagram	As Shown



Site Plan | 1:1000 @ A1



Client



Education
School Infrastructure

Project
New High School for Schofields and Tallawong
Guntawong Road, Tallawong NSW 2155

S I T E I M A G E

Level 1, 3-5 Baptist Street
Redfern NSW 2016
Australia
Tel: (61 2) 8332 5600
Fax: (61 2) 9698 2877
www.siteimage.com.au
Site Image (NSW) Pty Ltd
ABN 44 801 262 380



Landscape Architects

REF

Drawing Name
Landscape Coversheet

Scale	As Shown @ A1	Job Number	Drawing Number	Issue
		SS24-5343		000 03

NOT FOR CONSTRUCTION

Cumberland Plain	Cumberland Red Gum Riverflat Forest	CwC		Botanic Name	Common Name	Mature Size (H x W)	Pot Size	Density	Quantity	
				TREES						
				Ad	Acacia decurrens	Black Wattle	10 x 4	200L	As Shown	
				Afa	Acacia falcata	Sickle Wattle	3 x 2	200L	As Shown	
				Ai	Acacia implexa	Lightwood	8 x 7	200L	As Shown	
				Afl	Angophora floribunda	Rough Bark Apple	30 x 10	200L	As Shown	
				As	Angophora subvelutina	Broad-leaved Apple	7 x 6	200L	As Shown	
				At	Allocasuarina torulosa	Forest She Oak	8 x 5	200L	As Shown	
		Fragrance		Bc	Backhousia citriodora	Lemon Myrtle	8 x 4	200L	As Shown	
				Bi	Banksia integrifolia	Coast Banksia	15 x 6	200L	As Shown	
				Bs	Bursaria spinosa	Native Blackthorn	10 x 4	200L	As Shown	
				Cm	Corymbia maculata	Spotted Gum	20 x 12	200L	As Shown	
				Ea	Eucalyptus amplifolia	Cabbage Gum	20 x 6	200L	As Shown	
				Ecr	Eucalyptus crebra	Grey Ironbark	35 x 10	200L	As Shown	
				Ecu	Exocarpos cupressiformis	Native Cherry	8 x 5	200L	As Shown	
				Ee	Eucalyptus eugenoides	Narrow-leaved Stringybark	25 x 8	200L	As Shown	
				Et	Eucalyptus tereticornis	Forest Red gum	20 x 5	200L	As Shown	
				Emo	Eucalyptus moluccana	Grey Box	25 x 8	200L	As Shown	
				Ep	Eucalyptus pipitata	Sydney Peppermint	20 x 10	200L	As Shown	
				Ma	Melaleuca alternifolia	Tea Tree	7 x 4	200L	As Shown	
				Mq	Melaleuca quinquenervia	Broad-leaved Paperbark	15 x 10	200L	As Shown	
				Ss	Syzygium smithii	Lilly Pilly	10 x 6	200L	As Shown	
				Tl	Tristanopsis laurina	Water Gum	13 x 6	200L	As Shown	
				PALMS AND FEATURE SHRUBS						
				La	Livistona australis	Cabbage Tree Palm	15 x 4	5m trunk	As Shown	
				Xa	Xanthorrhoea spp.	Grass Tree	1 x 1	45L	As Shown	
				MATRIX 1 ENTRY PLAZA						
				AREA SQM	764					
					Botanic Name	Common Name	Mature Size (H x W)	Pot Size	Density/SQM	Quantity
				SHRUBS & ACCENTS						
				Bs	Bursaria spinosa	Blackthorn	4 x 2	300mm	1	
				Ia	Indigofera australis	Native Indigo	2 x 2	300mm	1	
				Be	Banksia ericifolia	Heath Banksia	2 x 2	300mm	1	
				CLJ	Callistemon 'Little John'	Dwarf Bottlebrush	1 x 1	300mm	1	
				De	Doryanthes excelsa	Gynea Lily	2 x 2	300mm	1	
				Od	Ozothamnus diosmifolius	Everlasting	1.5 x 1.2	300mm	1	
				STT	Syzygium 'Tiny Trev'	Dwarf Lilly Pilly	0.6 x 0.6	300mm	1	
				GRASSES & GROUND COVERS						
		Medicine		Cg	Carpobrotus glaucescens	Pig Face	2 x 1	150mm	5	
				BBC	Banksia spinulosa 'Bush Candles'	Banksia	2 x 2	150mm	5	
				GMT	Grevillea lanigera 'Mount Tamboritha'	Wooly Grevillea	0.5 x 1	150mm	5	
				DI	Dianella longifolia	Blue Flax Lily	1 x 1.5	150mm	5	
				Dr	Dianella revoluta	Blueberry Lily	4 x 4	150mm	5	
				Dr	Dichondra repens	Kidney Weed	15 x spread	150mm	5	
				Hv	Hardenbergia violacea	Native Sarsaparilla	5 x 1	150mm	5	
				Hd	Hibbertia diffusa	Wedge Guinea Flower	3 x 1	150mm	5	
				li	Isolepis inundatus		0.5 x 0.4	150mm	5	
				Ju	Juncus usitatus	Common Rush	0.4 x 0.5	150mm	5	
				Lf	Lomandra filiformis	Wattle Mat-rush	0.75 x 1	150mm	5	
				Wa	Wahlenbergia stricta	Australian Bluebell	4 x 4	150mm	5	
				Vh	Viola hederacea	Native Violet	0.2 x 0.5	150mm	5	
				MATRIX 2 ASSEMBLY & SCHOOL HEART						
				AREA SQM	3839					
					Botanic Name	Common Name	Mature Size (H x W)	Pot Size	Density/SQM	Quantity
				SHRUBS & ACCENTS						
		Food		At	Austrorhynchus tenuifolia	Midgen Berry	2 x 1.5	300mm	2	
				AS	Acmena smithii 'Sublime'		5 x 3	300mm	2	
				Dv	Dodonaea viscosa	Wedge Leaf Hop Bush	4 x 2	300mm	2	

Landscape is to be managed for perpetuity in accordance with Planning for Bush Fire Protection 2019.

- tree canopy cover should be less than 15% at maturity;
- trees at maturity should not touch or overhang the building;
- lower limbs should be removed up to a height of 2m above the ground;
- tree canopies should be separated by 2 to 5m;

- create large discontinuities or gaps in the vegetation to slow down or break the progress of fire towards buildings should be provided;
- shrubs should not be located under trees;
- shrubs should not form more than 10% ground cover; and clumps of shrubs should be separated from exposed windows and doors by a distance of at least twice the height of the vegetation.

- grass should be kept mown (as a guide grass should be kept to no more than 100mm in height)
- leaves and vegetation debris should be removed.

03	REF	RG	NM	20.01.20
02	REF	RG	NM	10.01.20
01	Final Draft Issue for REF	RG	NM	22.11.20
Issue	Revision Description	Drawn	Check	Date



NSW
GOVERNMENT

Education
School Infrastructure

S I T E I M A G E

Site Image (NSW) Pty Ltd
ABN 44 801 262 380



Landscape Architects

Drawing Name

Scale N/A

Job Number	Drawing Number	Issue
------------	----------------	-------

SS24-5343

Drawing Number

Issue

SS24-5343

002 03

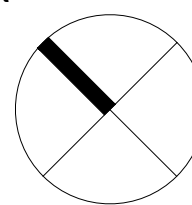
NOT FOR CONSTRUCTION

© 2021 Site Image (NSW) Pty Ltd ABN 44 801 262 380 as agent for Site Image NSW Partnership. All rights reserved. This drawing is copyright and shall not be reproduced or copied in any form or by any means (graphic, electronic or mechanical including photocopy) without the written permission of Site Image (NSW) Pty Ltd. Any license, expressed or implied, to use this document for any purpose what so ever is restricted to the terms of the written agreement between Site Image (NSW) Pty Ltd and the instructing party.

The contractor shall check and verify all work on site (including work by others) before commencing the landscape installation. Any discrepancies are to be reported to the Project Manager or Landscape Architect prior to commencing work. Do not scale this drawing. Any required dimensions not shown shall be referred to the Landscape Architect for confirmation.

03	REF	RG	NM	20.01.2025
02	REF	RG	NM	10.01.2025
01	Final Draft Issue for REF	RG	NM	22.11.2024
Issue		Revision Description		Drawn Check Date

- Legend
- Site Boundary
 - Proposed Trees
Refer Plant Schedule
 - Turf
 - Hydromulch Grass
 - Planting Matrix 1
Refer Plant Schedule
 - Planting Matrix 2
Refer Plant Schedule
 - Planting Matrix 3
Refer Plant Schedule
 - Planting Matrix 4
Refer Plant Schedule
 - Planting Matrix 5
Refer Plant Schedule
 - Timber Edge
 - In Situ Concrete Walls
 - In Situ Coloured Concrete
with Oxide Paving
 - Artificial Turf
 - Permeable Paver in
Carpark
 - Asphalt
 - Paint over Asphalt
Artwork and colour to Artist



Project
New High School for Schofields and Tallawong
Guntawong Road, Tallawong NSW 2155

SITE IMAGE
Level 1, 3-5 Baptist Street
Redfern NSW 2016
Australia
Tel: (61 2) 8332 5600
Fax: (61 2) 9698 2877
www.siteimage.com.au
Site Image (NSW) Pty Ltd
ABN 44 801 262 380
Landscape Architects

REF

Drawing Name
Landscape Masterplan

Scale 1:500 @ A1
Job Number
Drawing Number
Issue

SS24-5343 100 03

NOT FOR CONSTRUCTION



Nirmal Street

Guntawong Road

For continuation refer 102


© 2021 Site Image (NSW) Pty Ltd ABN 44 801 262 380 as agent for Site Image NSW Partnership. All rights reserved. This drawing is copyright and shall not be reproduced or copied in any form or by any means (graphic, electronic or mechanical including photocopy) without the written permission of Site Image (NSW) Pty Ltd. Any license, expressed or implied, to use this document for any purpose what so ever is restricted to the terms of the written agreement between Site Image (NSW) Pty Ltd and the instructing party.

The contractor shall check and verify all work on site (including work by others) before commencing the landscape installation. Any discrepancies are to be reported to the Project Manager or Landscape Architect prior to commencing work. Do not scale this drawing. Any required dimensions not shown shall be referred to the Landscape Architect for confirmation.

03	REF	RG	NM	20.01.2025
02	REF	RG	NM	10.01.2025
01	Final Draft Issue for REF	RG	NM	22.11.2024
Issue		Revision Description		Drawn Check Date

- Legend**
- Site Boundary
 - Proposed Trees
Refer Plant Schedule
 - Turf
 - Hydromulch Grass
 - Planting Matrix 1
Refer Plant Schedule
 - Planting Matrix 2
Refer Plant Schedule
 - Planting Matrix 3
Refer Plant Schedule
 - Planting Matrix 4
Refer Plant Schedule
 - Planting Matrix 5
Refer Plant Schedule
 - Timber Edge
 - In Situ Concrete Walls
 - In Situ Coloured Concrete
with Oxide Paving
 - Artificial Turf
 - Permeable Paver in
Carpark
 - Asphalt
 - Paint over Asphalt
Artwork and colour to Artist

Client

 **Education**
School Infrastructure

Project

New High School for Schofields and Tallawang
Guntawong Road, Tallawang NSW 2155

SITE IMAGE

Level 1, 3-5 Baptist Street
Redfern NSW 2016
Australia

Tel: (61 2) 8332 5600
Fax: (61 2) 9698 2877
www.siteimage.com.au

Site Image (NSW) Pty Ltd
ABN 44 801 262 380


Landscape Architects

REF

Drawing Name

Landscape Plan - 1

Scale 1:150 @ A1

Job Number

SS24-5343

101 03

NOT FOR CONSTRUCTION

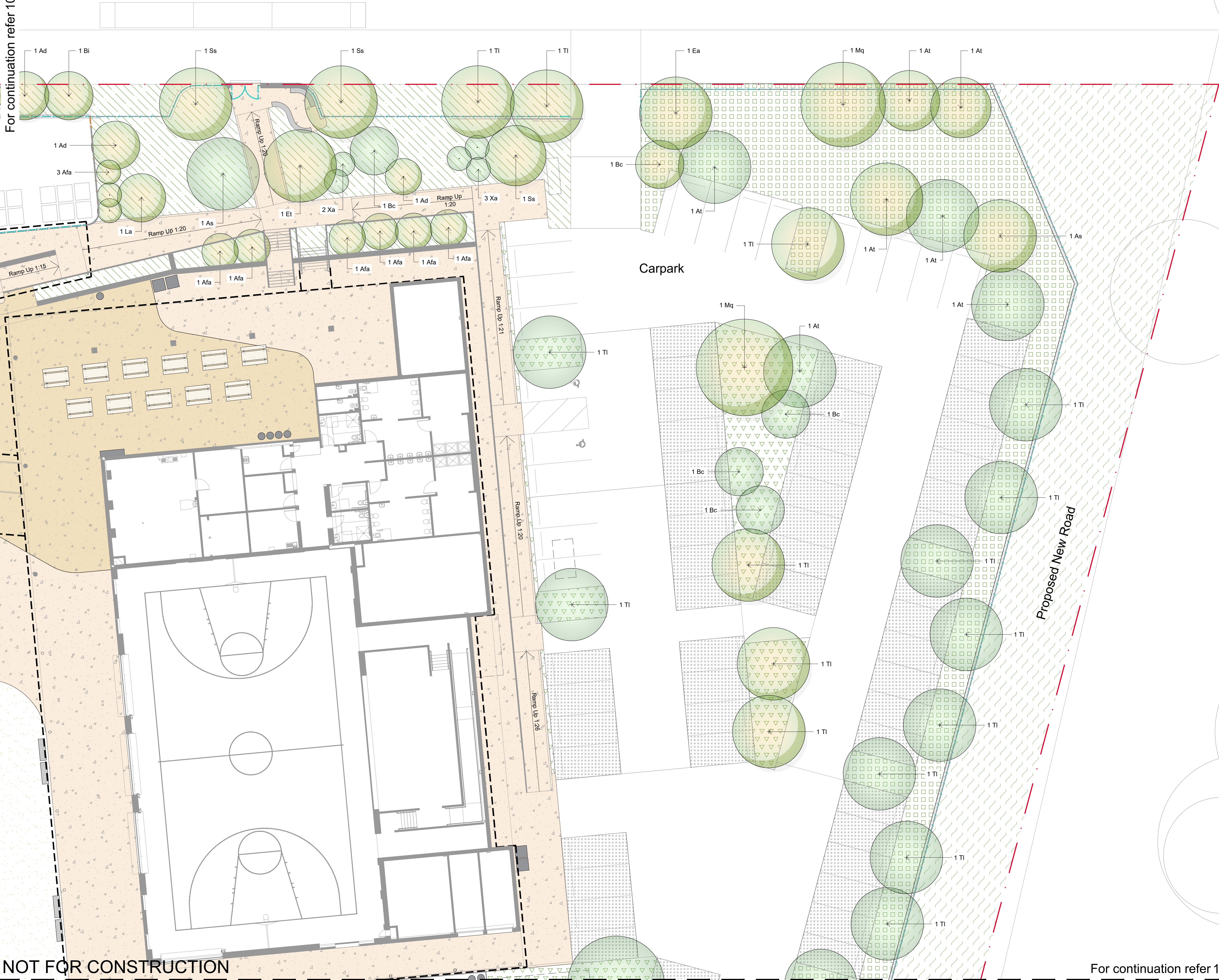
For continuation refer 104

For continuation refer 103

For continuation refer 105

For continuation refer 102

Nirmal Street

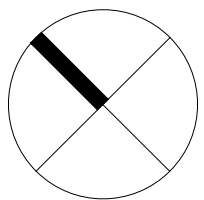


© 2021 Site Image (NSW) Pty Ltd ABN 44 801 262 380 as agent for Site Image NSW Partnership. All rights reserved. This drawing is copyright and shall not be reproduced or copied in any form or by any means (graphic, electronic or mechanical including photocopy) without the written permission of Site Image (NSW) Pty Ltd. Any license, expressed or implied, to use this document for any purpose what so ever is restricted to the terms of the written agreement between Site Image (NSW) Pty Ltd and the instructing party.

The contractor shall check and verify all work on site (including work by others) before commencing the landscape installation. Any discrepancies are to be reported to the Project Manager or Landscape Architect prior to commencing work. Do not scale this drawing. Any required dimensions not shown shall be referred to the Landscape Architect for confirmation.

03	REF	RG	NM	20.01.2025
02	REF	RG	NM	10.01.2025
01	Final Draft Issue for REF	RG	NM	22.11.2024
Issue		Drawn	Check	Date

- Legend
- Site Boundary
 - Proposed Trees
Refer Plant Schedule
 - Turf
 - Hydromulch Grass
 - Planting Matrix 1
Refer Plant Schedule
 - Planting Matrix 2
Refer Plant Schedule
 - Planting Matrix 3
Refer Plant Schedule
 - Planting Matrix 4
Refer Plant Schedule
 - Planting Matrix 5
Refer Plant Schedule
 - Timber Edge
 - In Situ Concrete Walls
 - In Situ Coloured Concrete with Oxide Paving
 - Artificial Turf
 - Permeable Paver in Carpark
 - Asphalt
 - Paint over Asphalt
Artwork and colour to Artist



Client
NSW Education
GOVERNMENT School Infrastructure

Project
New High School for Schofields and Tallawong
Guntawong Road, Tallawong NSW 2155

SITE IMAGE
Level 1, 3-5 Baptist Street
Redfern NSW 2016
Australia
Tel: (61 2) 8332 5600
Fax: (61 2) 9698 2877
www.siteimage.com.au
Site Image (NSW) Pty Ltd
ABN 44 801 262 380



REF

Drawing Name
Landscape Plan - 3

Scale 1:150 @ A1
Job Number
SS24-5343

0 1 2 3 5m
Drawing Number
103 03

Issue

NOT FOR CONSTRUCTION

For continuation refer 106

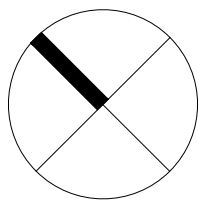
For continuation refer 101

© 2021 Site Image (NSW) Pty Ltd ABN 44 801 262 380 as agent for Site Image NSW Partnership. All rights reserved. This drawing is copyright and shall not be reproduced or copied in any form or by any means (graphic, electronic or mechanical including photocopy) without the written permission of Site Image (NSW) Pty Ltd. Any license, expressed or implied, to use this document for any purpose what so ever is restricted to the terms of the written agreement between Site Image (NSW) Pty Ltd and the instructing party.

The contractor shall check and verify all work on site (including work by others) before commencing the landscape installation. Any discrepancies are to be reported to the Project Manager or Landscape Architect prior to commencing work. Do not scale this drawing. Any required dimensions not shown shall be referred to the Landscape Architect for confirmation.

03	REF	RG	NM	20.01.2025
02	REF	RG	NM	10.01.2025
01	Final Draft Issue for REF	RG	NM	22.11.2024
Issue	Revision Description	Drawn	Check	Date

- Legend
- Site Boundary
 - Proposed Trees
Refer Plant Schedule
 - Turf
 - Hydromulch Grass
 - Planting Matrix 1
Refer Plant Schedule
 - Planting Matrix 2
Refer Plant Schedule
 - Planting Matrix 3
Refer Plant Schedule
 - Planting Matrix 4
Refer Plant Schedule
 - Planting Matrix 5
Refer Plant Schedule
 - Timber Edge
 - In Situ Concrete Walls
 - In Situ Coloured Concrete with Oxide Paving
 - Artificial Turf
 - Permeable Paver in Carpark
 - Asphalt
 - Paint over Asphalt
Artwork and colour to Artist



Client

NSW Education
GOVERNMENT School Infrastructure

Project

New High School for Schofields and Tallawong
Guntawong Road, Tallawong NSW 2155

SITE IMAGE

Level 1, 3-5 Baptist Street
Redfern NSW 2016
Australia

Tel: (61 2) 8332 5600
Fax: (61 2) 9698 2877
www.siteimage.com.au

Site Image (NSW) Pty Ltd
ABN 44 801 262 380

Landscape Architects

REF

Drawing Name

Landscape Plan - 4

Scale 1:150 @ A1

Job Number

Drawing Number

0 1 2 3 4 5m

Issue

SS24-5343

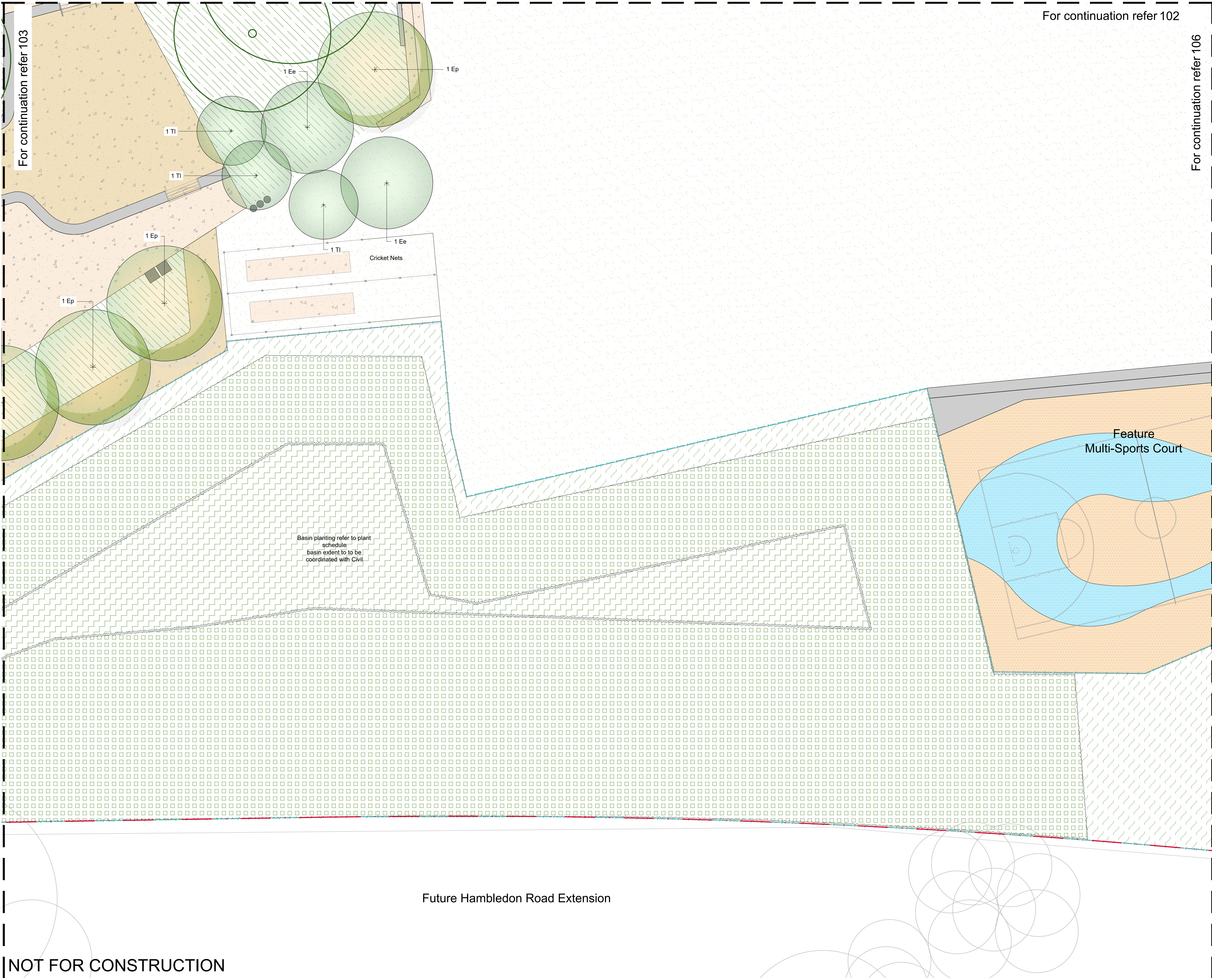
104 03

Guntawong Road

Ramp Up 1:20

Future Hambledon Road Extension

NOT FOR CONSTRUCTION



For continuation refer 102

For continuation refer 106

© 2021 Site Image (NSW) Pty Ltd ABN 44 801 262 380 as agent for Site Image NSW Partnership. All rights reserved. This drawing is copyright and shall not be reproduced or copied in any form or by any means (graphic, electronic or mechanical including photocopy) without the written permission of Site Image (NSW) Pty Ltd. Any license, expressed or implied, to use this document for any purpose what so ever is restricted to the terms of the written agreement between Site Image (NSW) Pty Ltd and the instructing party.

The contractor shall check and verify all work on site (including work by others) before commencing the landscape installation. Any discrepancies are to be reported to the Project Manager or Landscape Architect prior to commencing work. Do not scale this drawing. Any required dimensions not shown shall be referred to the Landscape Architect for confirmation.

03	REF	RG	NM	20.01.2025
02	REF	RG	NM	10.01.2025
01	Final Draft Issue for REF	RG	NM	22.11.2024
Issue	Revision Description	Drawn	Check	Date

- Legend**
- Site Boundary
 - Proposed Trees
Refer Plant Schedule
 - Turf
 - Hydromulch Grass
 - Planting Matrix 1
Refer Plant Schedule
 - Planting Matrix 2
Refer Plant Schedule
 - Planting Matrix 3
Refer Plant Schedule
 - Planting Matrix 4
Refer Plant Schedule
 - Planting Matrix 5
Refer Plant Schedule
 - Timber Edge
 - In Situ Concrete Walls
 - In Situ Coloured Concrete
with Oxide Paving
 - Artificial Turf
 - Permeable Paver in
Carpark
 - Asphalt
 - Paint over Asphalt
Artwork and colour to Artist

Client
NSW GOVERNMENT
Education
School Infrastructure

Project
New High School for Schofields and Tallawong
Guntawong Road, Tallawong NSW 2155

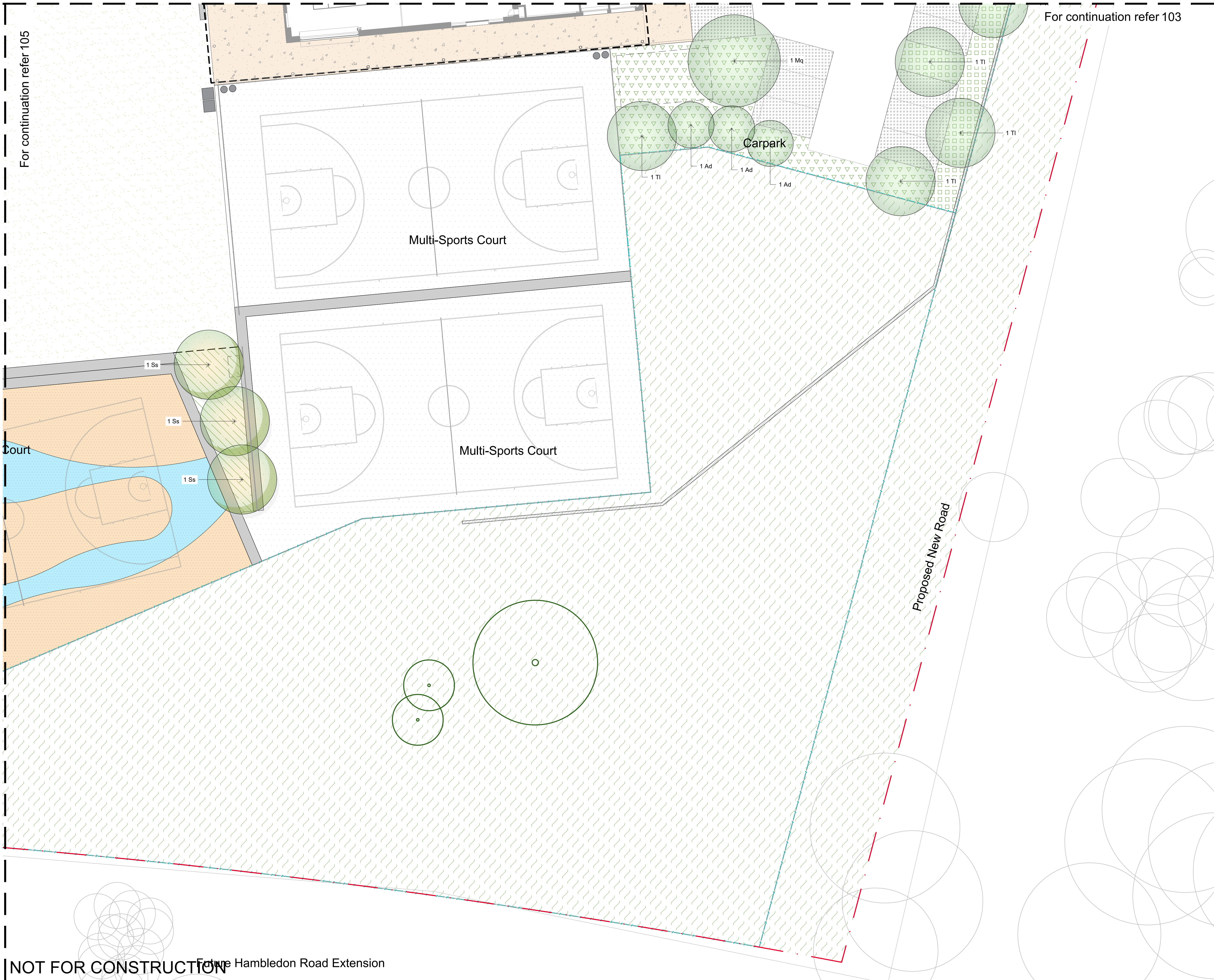
SITE IMAGE
Landscape Architects
Level 1, 3-5 Baptist Street
Redfern NSW 2016
Australia
Tel: (61 2) 8332 5600
Fax: (61 2) 9698 2877
www.siteimage.com.au
Site Image (NSW) Pty Ltd
ABN 44 801 262 380

REF

Drawing Name
Landscape Plan - 5

Scale 1:150 @ A1
Job Number
SS24-5343
Drawing Number
105
Issue
03

NOT FOR CONSTRUCTION



© 2021 Site Image (NSW) Pty Ltd ABN 44 801 262 380 as agent for Site Image NSW Partnership. All rights reserved. This drawing is copyright and shall not be reproduced or copied in any form or by any means (graphic, electronic or mechanical including photocopy) without the written permission of Site Image (NSW) Pty Ltd. Any license, expressed or implied, to use this document for any purpose what so ever is restricted to the terms of the written agreement between Site Image (NSW) Pty Ltd and the instructing party.

The contractor shall check and verify all work on site (including work by others) before commencing the landscape installation. Any discrepancies are to be reported to the Project Manager or Landscape Architect prior to commencing work. Do not scale this drawing. Any required dimensions not shown shall be referred to the Landscape Architect for confirmation.

03	REF	RG	NM	20.01.2025
02	REF	RG	NM	10.01.2025
01	Final Draft Issue for REF	RG	NM	22.11.2024
Issue		Revision Description		Drawn Check Date

- Legend**
- Site Boundary
 - Proposed Trees
Refer Plant Schedule
 - Turf
 - Hydromulch Grass
 - Planting Matrix 1
Refer Plant Schedule
 - Planting Matrix 2
Refer Plant Schedule
 - Planting Matrix 3
Refer Plant Schedule
 - Planting Matrix 4
Refer Plant Schedule
 - Planting Matrix 5
Refer Plant Schedule
 - Timber Edge
 - In Situ Concrete Walls
 - In Situ Coloured Concrete
with Oxide Paving
 - Artificial Turf
 - Permeable Paver in
Carpark
 - Asphalt
 - Paint over Asphalt
Artwork and colour to Artist

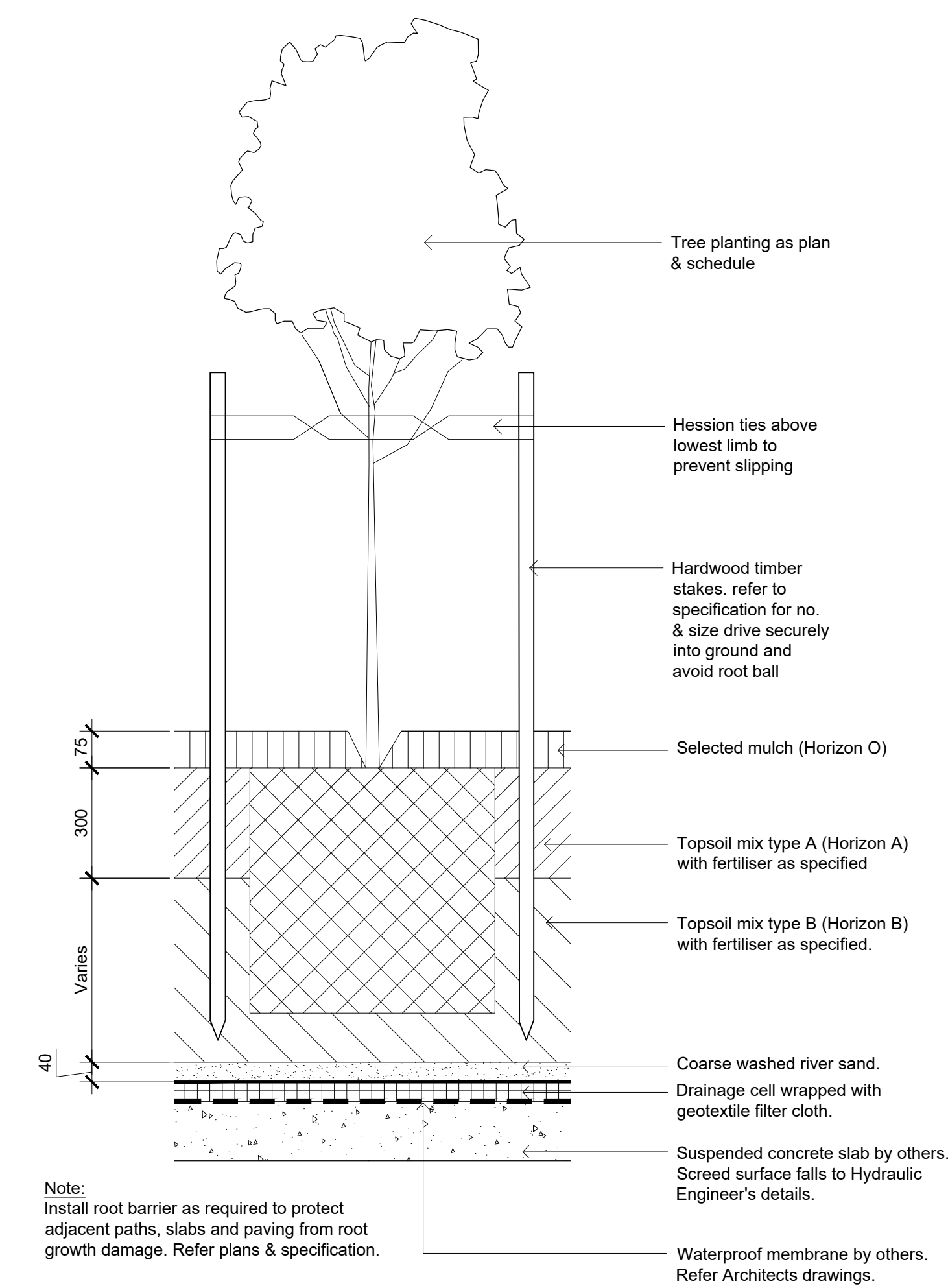



Project
New High School for Schofields and Tallawong
Guntawong Road, Tallawong NSW 2155

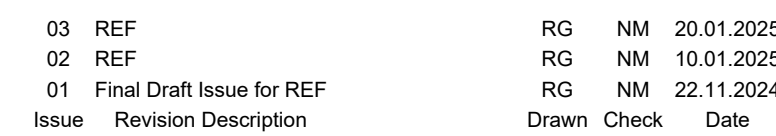
SITE IMAGE
Level 1, 3-5 Baptist Street
Redfern NSW 2016
Australia
Tel: (61 2) 8332 5600
Fax: (61 2) 9698 2877
www.siteimage.com.au
Site Image (NSW) Pty Ltd
ABN 44 801 262 380

REF
Drawing Name
Landscape Plan - 6

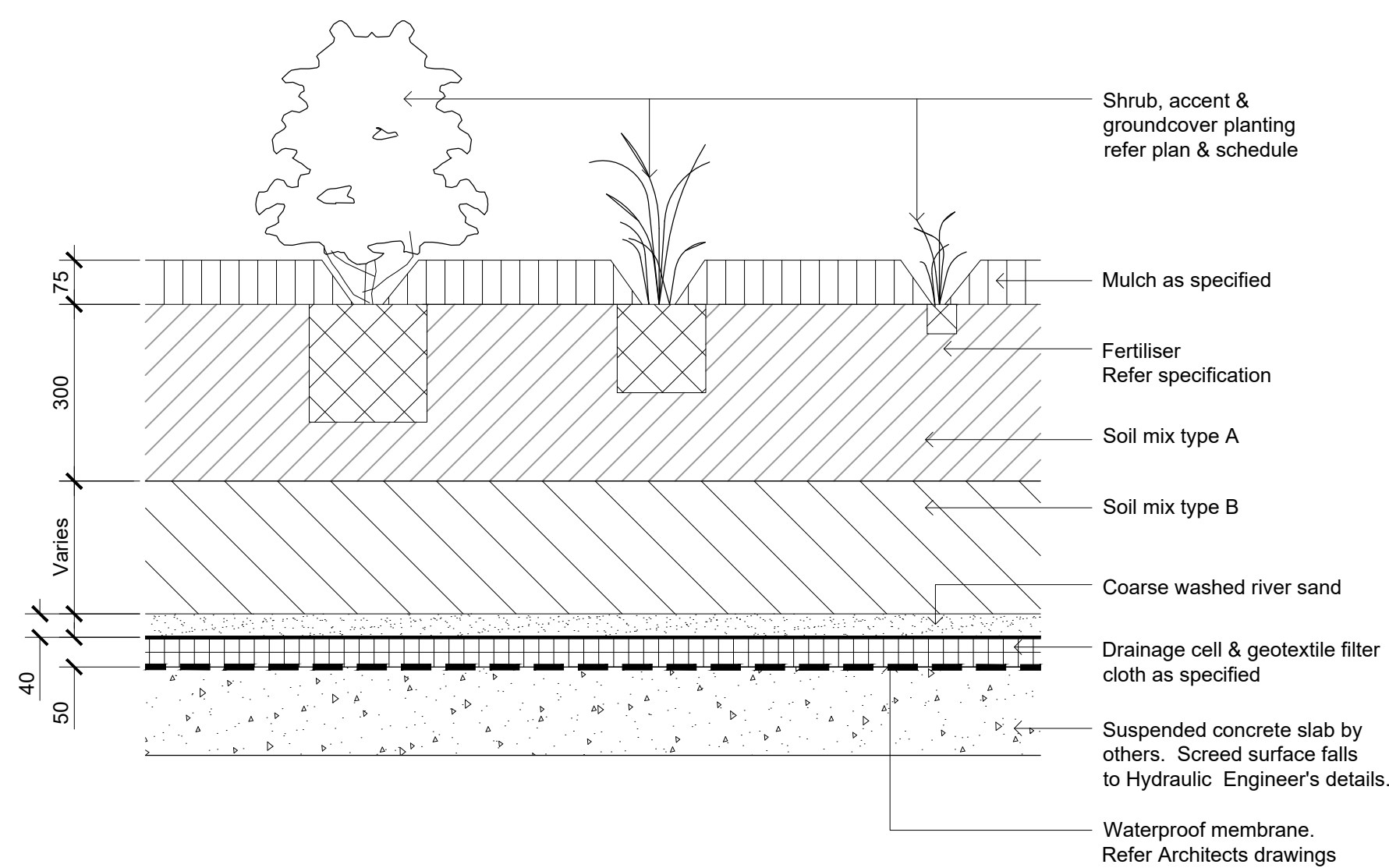
Scale 1:150 @ A1
Job Number
SS24-5343
Drawing Number
106
Issue
03



 Detail 75-200L Tree Planting on Structure
1:10



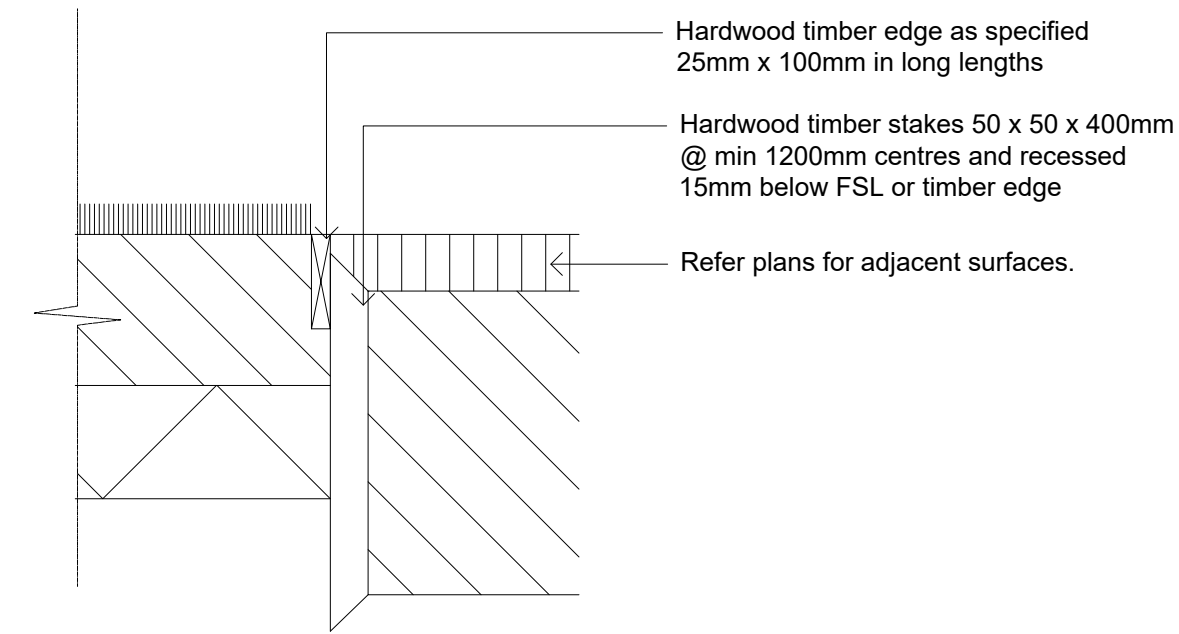
Typical Embankment Planting



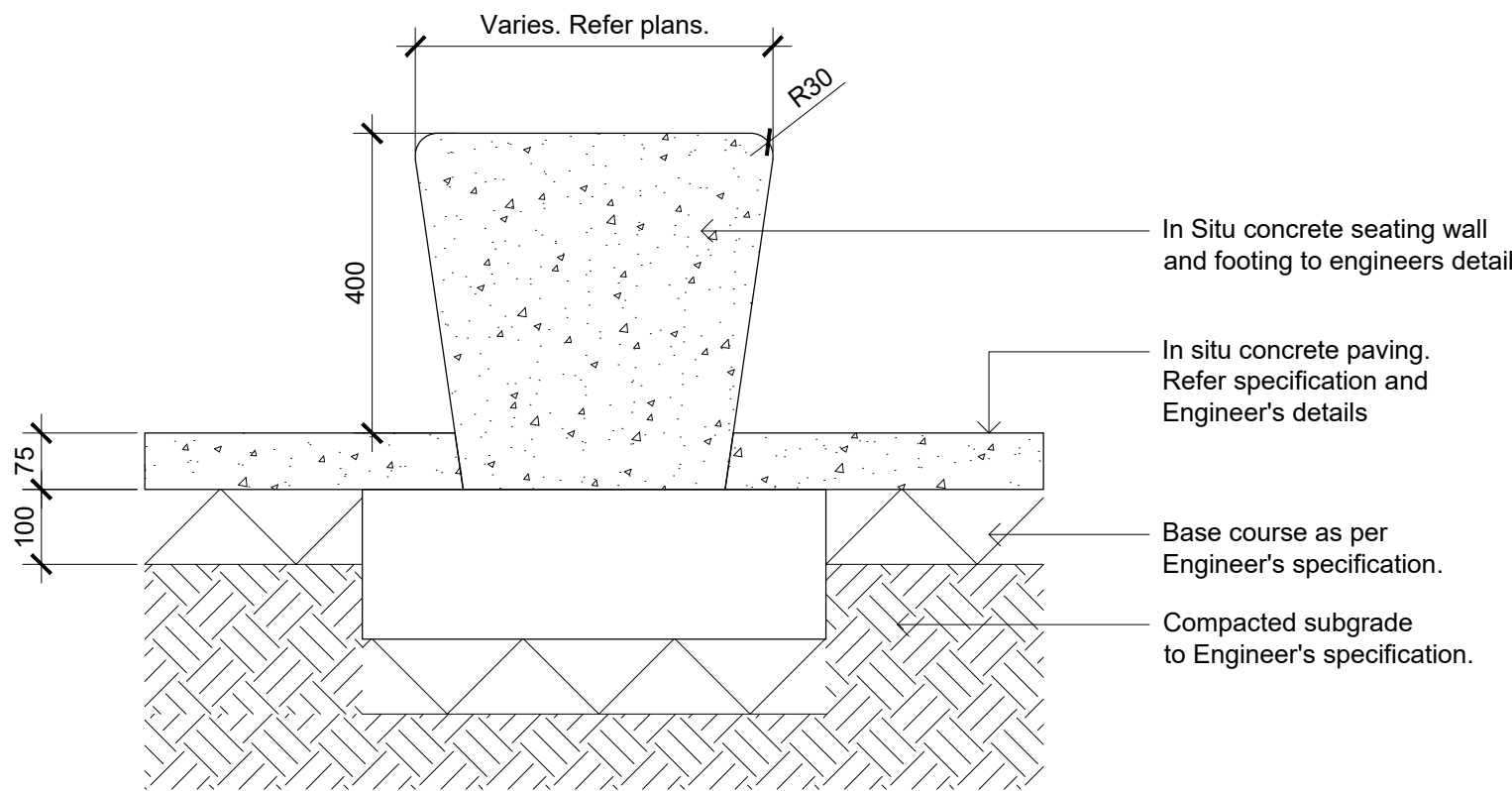
 Detail Shrub Accent & Groundcover Planting on Structure
1:10



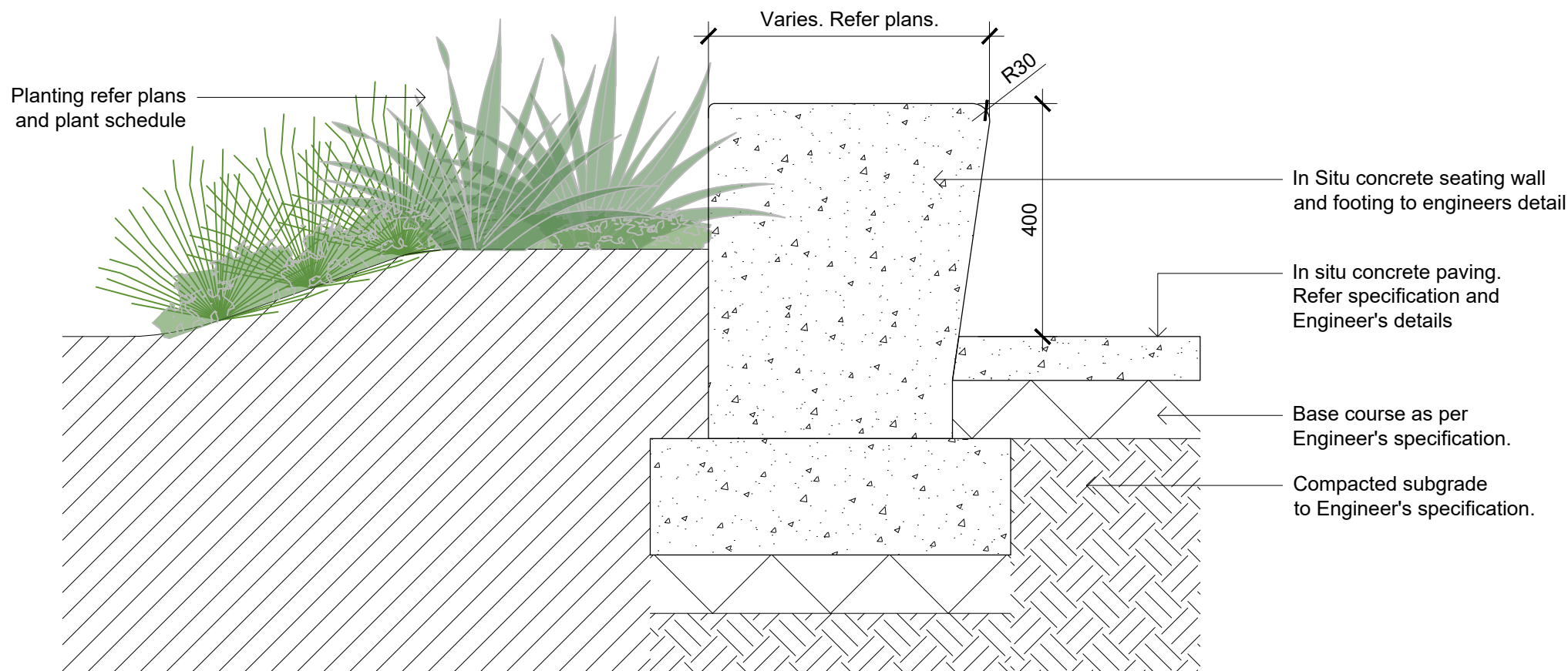
 **Detail Turf on Even Grade**
1:10



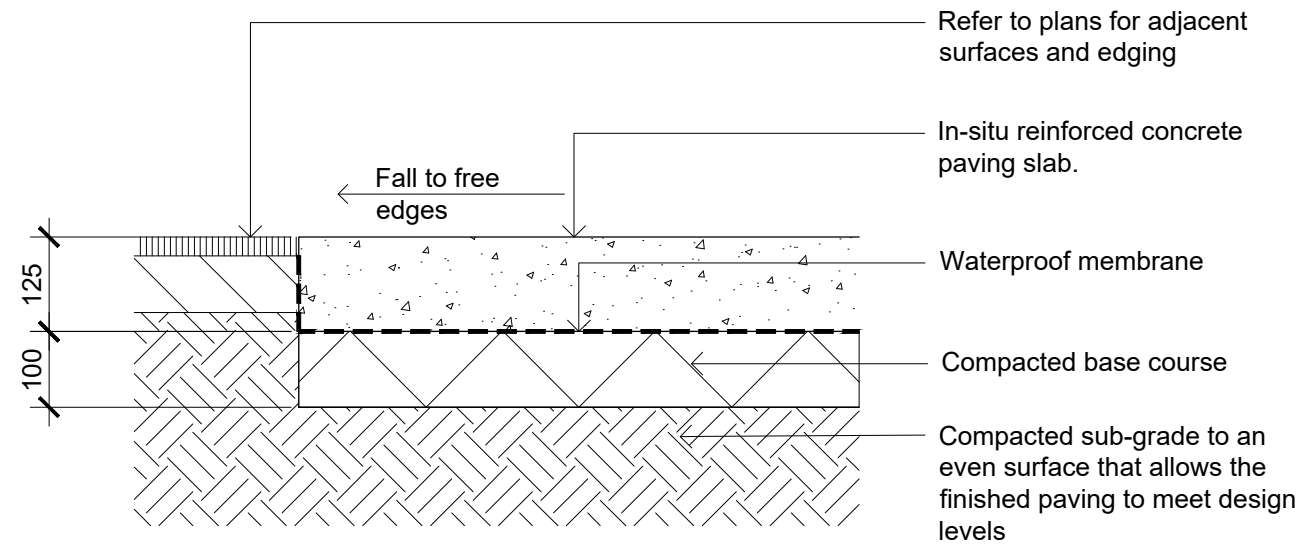
E1 - Timber Edge
1:10



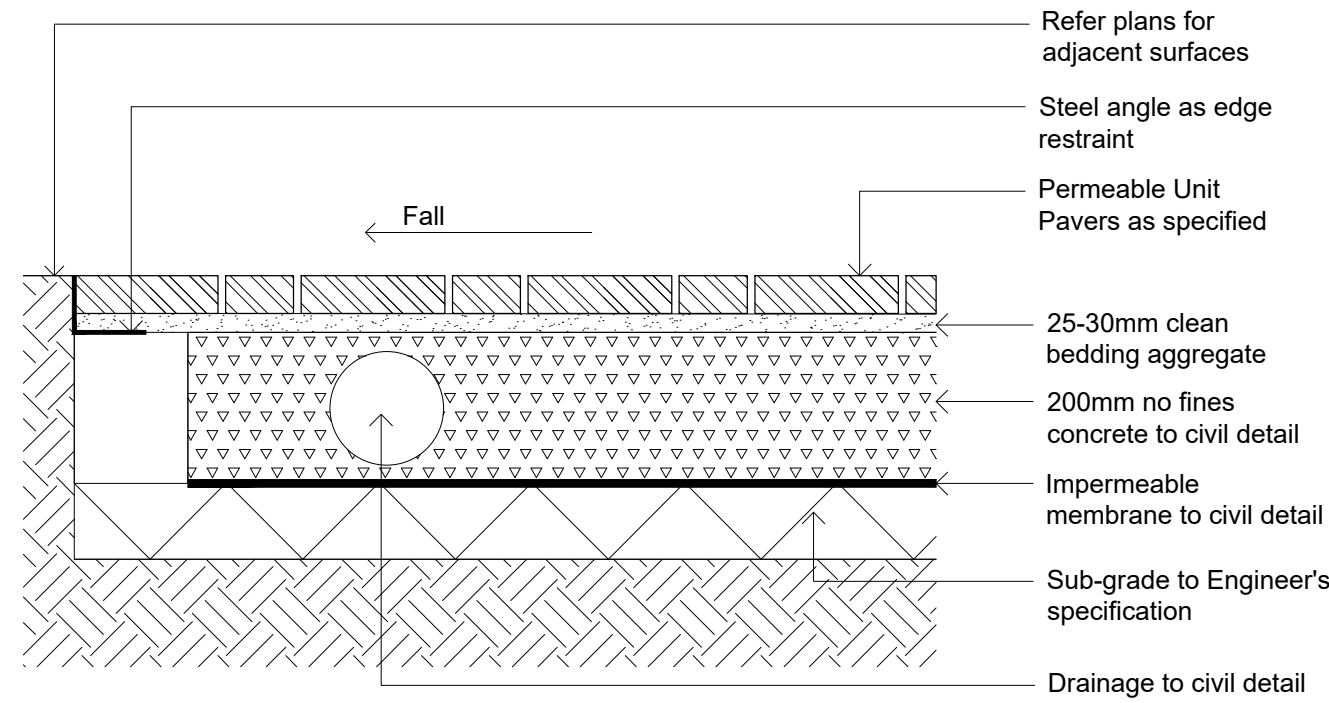
W2 - In Situ Concrete Seating Wall
1:10



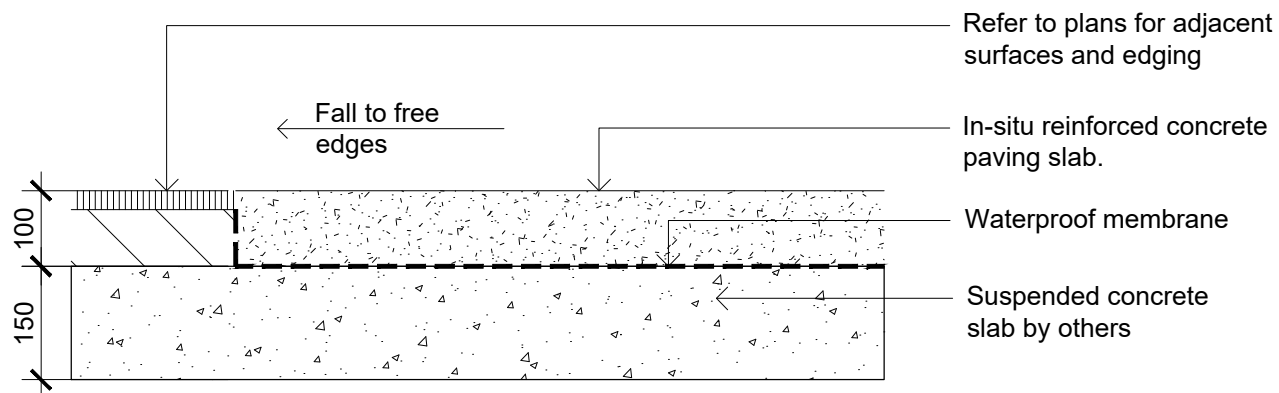
W2 - In Situ Concrete Seating Wall
1:10



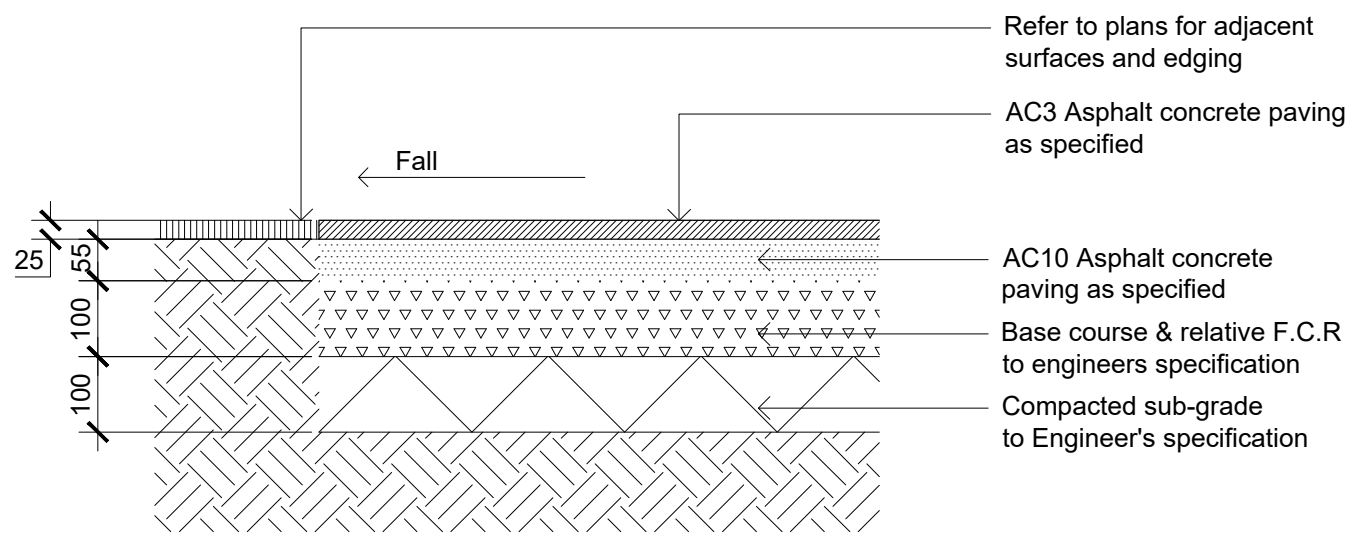
P1 P2 - Insitu Concrete Paving - On Grade
1:10



P3 - Permeable Unit Paving
1:10



P1 P2 - Insitu Concrete Paving - On Structure
1:10



P6 - Asphalt Concrete Paving on Grade
1:10

© 2021 Site Image (NSW) Pty Ltd ABN 44 801 262 380 as agent for Site Image NSW Partnership. All rights reserved. This drawing is copyright and shall not be reproduced or copied in any form or by any means (graphic, electronic or mechanical including photocopy) without the written permission of Site Image (NSW) Pty Ltd. Any license, expressed or implied, to use this document for any purpose what so ever is restricted to the terms of the written agreement between Site Image (NSW) Pty Ltd and the instructing party.

The contractor shall check and verify all work on site (including work by others) before commencing the landscape installation. Any discrepancies are to be reported to the Project Manager or Landscape Architect prior to commencing work. Do not scale this drawing. Any required dimensions not shown shall be referred to the Landscape Architect for confirmation.

03	REF	RG	NM	20.01.2025
02	REF	RG	NM	10.01.2025
01	Final Draft Issue for REF	RG	NM	22.11.2024
Issue	Revision Description	Drawn	Check	Date

Client

NSW Education
GOVERNMENT School Infrastructure

Project

New High School for Schofields and Tallawong
Guntawong Road, Tallawong NSW 2155

S I T E I M A G E

Level 1, 3-5 Baptist Street
Redfern NSW 2016
Australia

Tel: (61 2) 8332 5600
Fax: (61 2) 9698 2877
www.siteimage.com.au

Site Image (NSW) Pty Ltd
ABN 44 801 262 380

Landscape Architects

REF

Drawing Name

Landscape Details

Scale **As Shown @ A1**

Job Number Drawing Number Issue

SS24-5343 **502 03**

NOT FOR CONSTRUCTION

© 2021 Site Image (NSW) Pty Ltd ABN 44 801 262 380 as agent for Site Image NSW Partnership. All rights reserved. This drawing is copyright and shall not be reproduced or copied in any form or by any means (graphic, electronic or mechanical including photocopy) without the written permission of Site Image (NSW) Pty Ltd. Any license, expressed or implied, to use this document for any purpose what so ever is restricted to the terms of the written agreement between Site Image (NSW) Pty Ltd and the instructing party.

The contractor shall check and verify all work on site (including work by others) before commencing the landscape installation. Any discrepancies are to be reported to the Project Manager or Landscape Architect prior to commencing work. Do not scale this drawing. Any required dimensions not shown shall be referred to the Landscape Architect for confirmation.

03	REF	RG	NM	20.01.2025
02	REF	RG	NM	10.01.2025
01	Final Draft Issue for REF	RG	NM	22.11.2024
Issue		Revision Description		Drawn Check Date

Legend

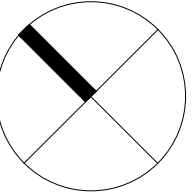
Site Boundary

Existing Trees to be Retained

Existing Trees to be Removed

TPZ

SRZ



Client



Education
School Infrastructure

Project
New High School for Schofields and Tallawong
Guntawong Road, Tallawong NSW 2155

SITE IMAGE

Level 1, 3-5 Baptist Street
Redfern NSW 2016
Australia

Tel: (61 2) 8332 5600
Fax: (61 2) 9698 2877
www.siteimage.com.au

Site Image (NSW) Pty Ltd
ABN 44 801 262 380



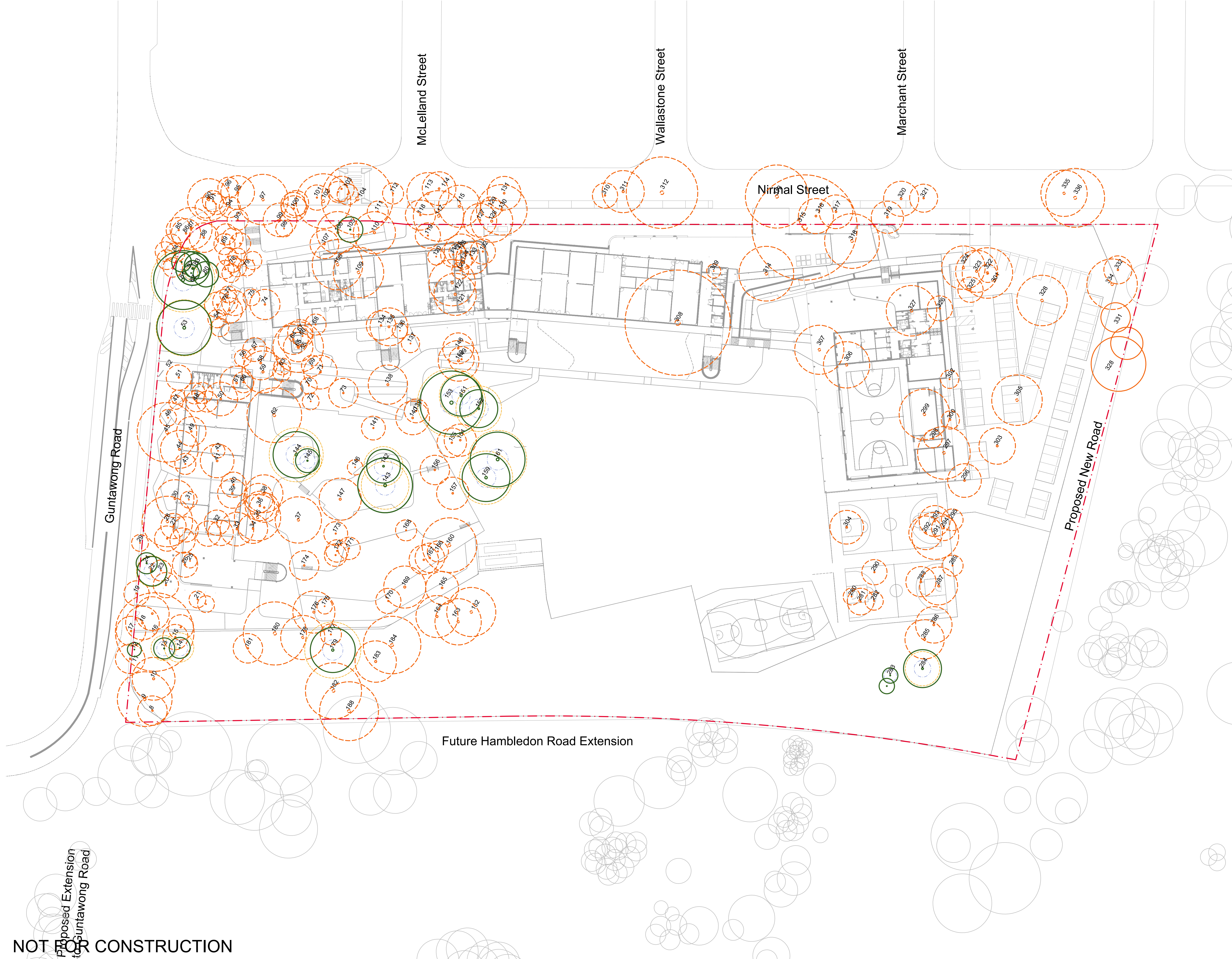
Landscape Architects

REF

Drawing Name
Tree Retention Plan

Scale 1:500 @ A1
Job Number
Drawing Number
Issue

SS24-5343 901 03



NOT FOR CONSTRUCTION

The contractor shall check and verify all work on site (including work by others) before commencing the landscape installation. Any discrepancies are to be reported to the Project Manager or Landscape Architect prior to commencing work. Do not scale this drawing. Any required dimensions not shown shall be referred to the Landscape Architect for confirmation.

03	REF	RG	NM	20.01.2025
02	REF	RG	NM	10.01.2025
01	Final Draft Issue for REF	RG	NM	22.11.2024
Issue	Revision Description	Drawn	Check	Date



01 Canopy Cover at Year 1
1:1200

Site Area	38350 sqm
Existing Tree Retained Canopy	1687.55 sqm (4.40%)
Year 1 Tree Canopy	498 sqm (1.30%)
Total Canopy	2185.55 sqm (5.70%)



02 Canopy Cover at Year 5
1:1200

Site Area	38350 sqm
Existing Tree Retained Canopy	1687.55 sqm (4.40%)
Year 5 Tree Canopy	1117.85 sqm (2.92%)
Total Canopy	2805.40 sqm (7.32%)



03 Canopy Cover at Maturity
1:1200

Site Area	38350 sqm
Existing Tree Retained Canopy	1687.55 sqm (4.40%)
Mature Tree Canopy	3928 sqm (10.24%)
Total Canopy	5615.55 sqm (14.64%)

NOT FOR CONSTRUCTION

Client

 **Education**
School Infrastructure

Project

New High School for Schofields and Tallawong
Guntawong Road, Tallawong NSW 2155

S I T E I M A G E

Level 1, 3-5 Baptist Street
Redfern NSW 2016
Australia

Tel: (61 2) 8332 5600
Fax: (61 2) 9698 2877
www.siteimage.com.au

Site Image (NSW) Pty Ltd
ABN 44 801 262 380


Landscape Architects

REF

Drawing Name

Canopy Cover Diagram

Scale: As Shown @ A1

Job Number

SS24-5343

Drawing Number

902

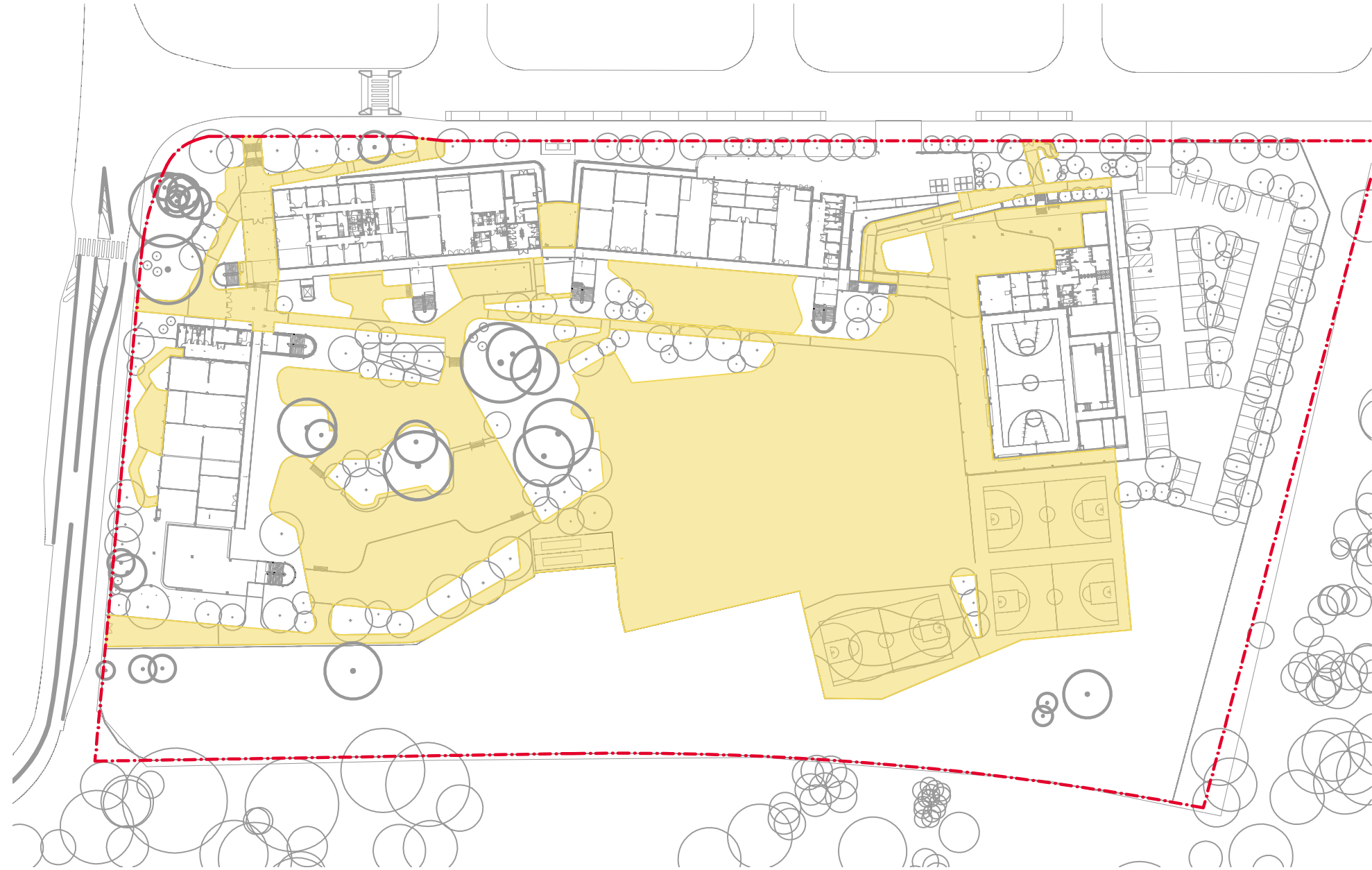
Issue

03



01 Landscape Area
1:1200

Site Area	38350 sqm
Landscape Area	15860 sqm
Permeable Paving Area	765.25 sqm



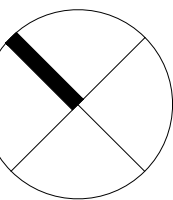
02 Unencumbered Play Space
1:1200

Site Area	38350 sqm
Unencumbered Play Space Area	13015.63 sqm

© 2021 Site Image (NSW) Pty Ltd ABN 44 801 262 380 as agent for Site Image NSW Partnership. All rights reserved. This drawing is copyright and shall not be reproduced or copied in any form or by any means (graphic, electronic or mechanical including photocopy) without the written permission of Site Image (NSW) Pty Ltd. Any license, expressed or implied, to use this document for any purpose what so ever is restricted to the terms of the written agreement between Site Image (NSW) Pty Ltd and the instructing party.

The contractor shall check and verify all work on site (including work by others) before commencing the landscape installation. Any discrepancies are to be reported to the Project Manager or Landscape Architect prior to commencing work. Do not scale this drawing. Any required dimensions not shown shall be referred to the Landscape Architect for confirmation.

03	REF	RG	NM	20.01.2025
02	REF	RG	NM	10.01.2025
01	Final Draft Issue for REF	RG	NM	22.11.2024
Issue	Revision Description	Drawn	Check	Date



Project
New High School for Schofields and Tallawong
Guntawong Road, Tallawong NSW 2155

S I T E I M A G E
Level 1, 3-5 Baptist Street
Redfern NSW 2016
Australia
Tel: (61 2) 8332 5600
Fax: (61 2) 9698 2877
www.siteimage.com.au
Site Image (NSW) Pty Ltd
ABN 44 801 262 380
Landscape Architects

REF

Drawing Name
Landscape Area Diagram

Scale As Shown @ A1
Job Number Drawing Number Issue
SS24-5343 903 03

NOT FOR CONSTRUCTION